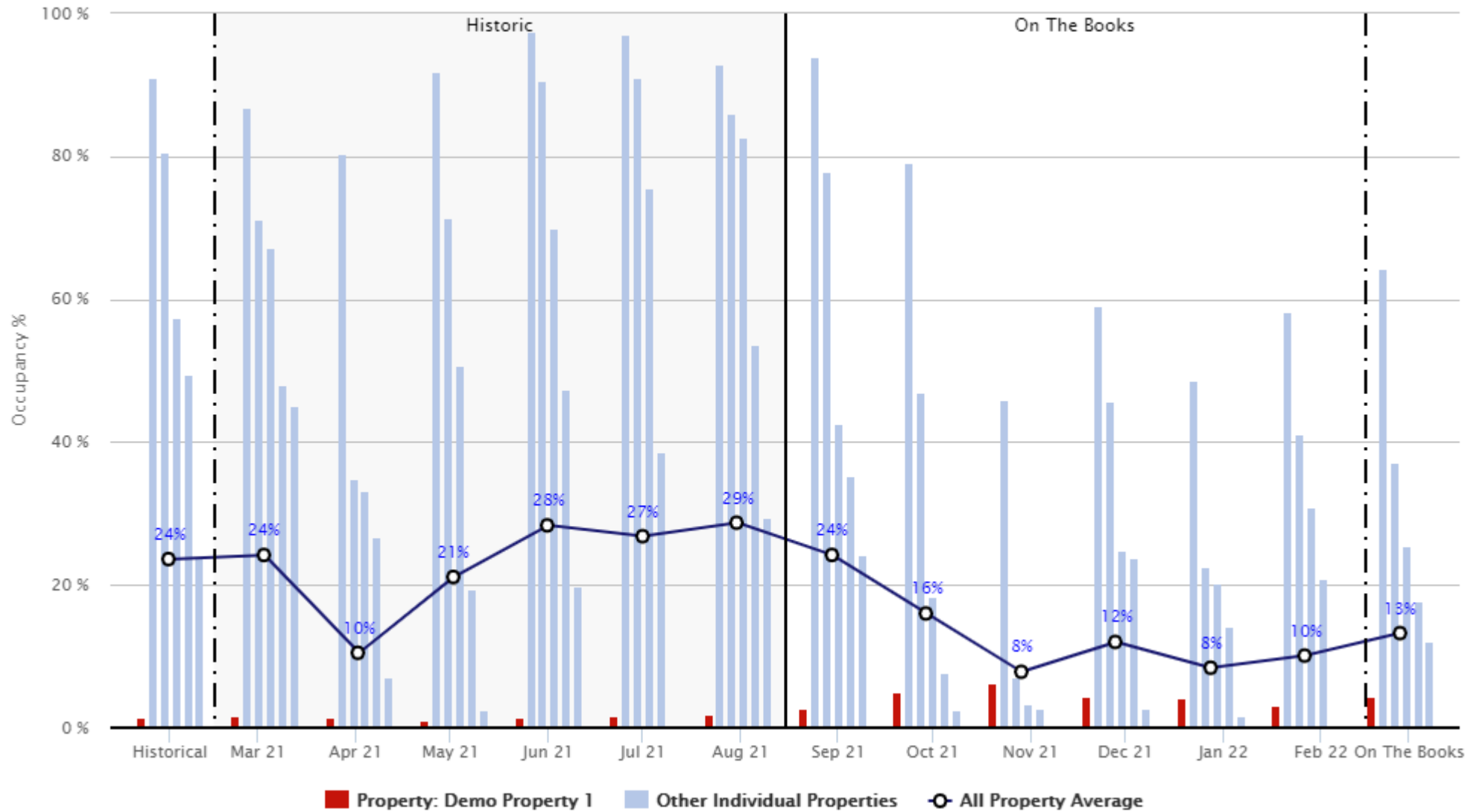


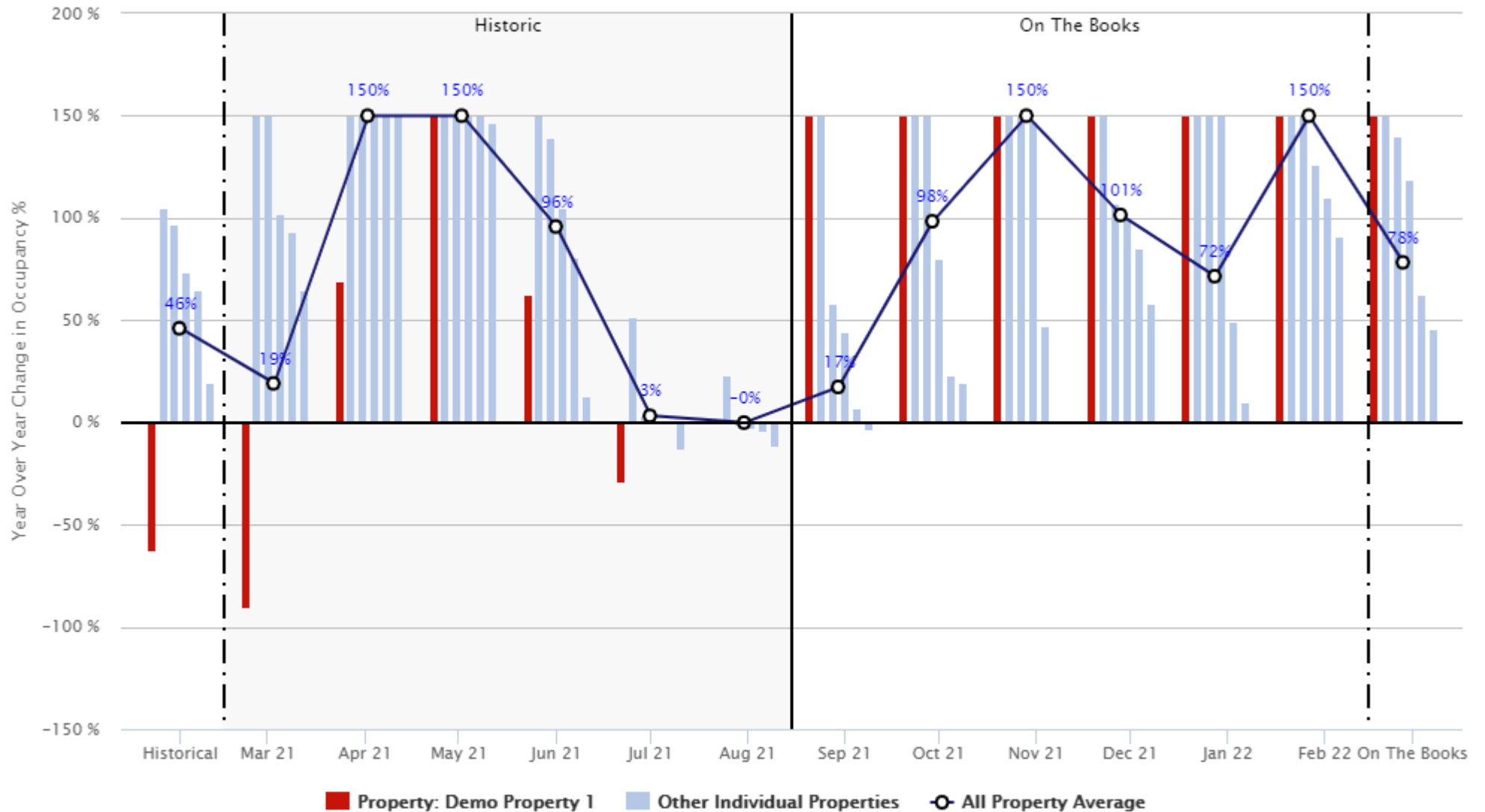
Overview Based on data from 6 reporting DestiMetrics Destinations

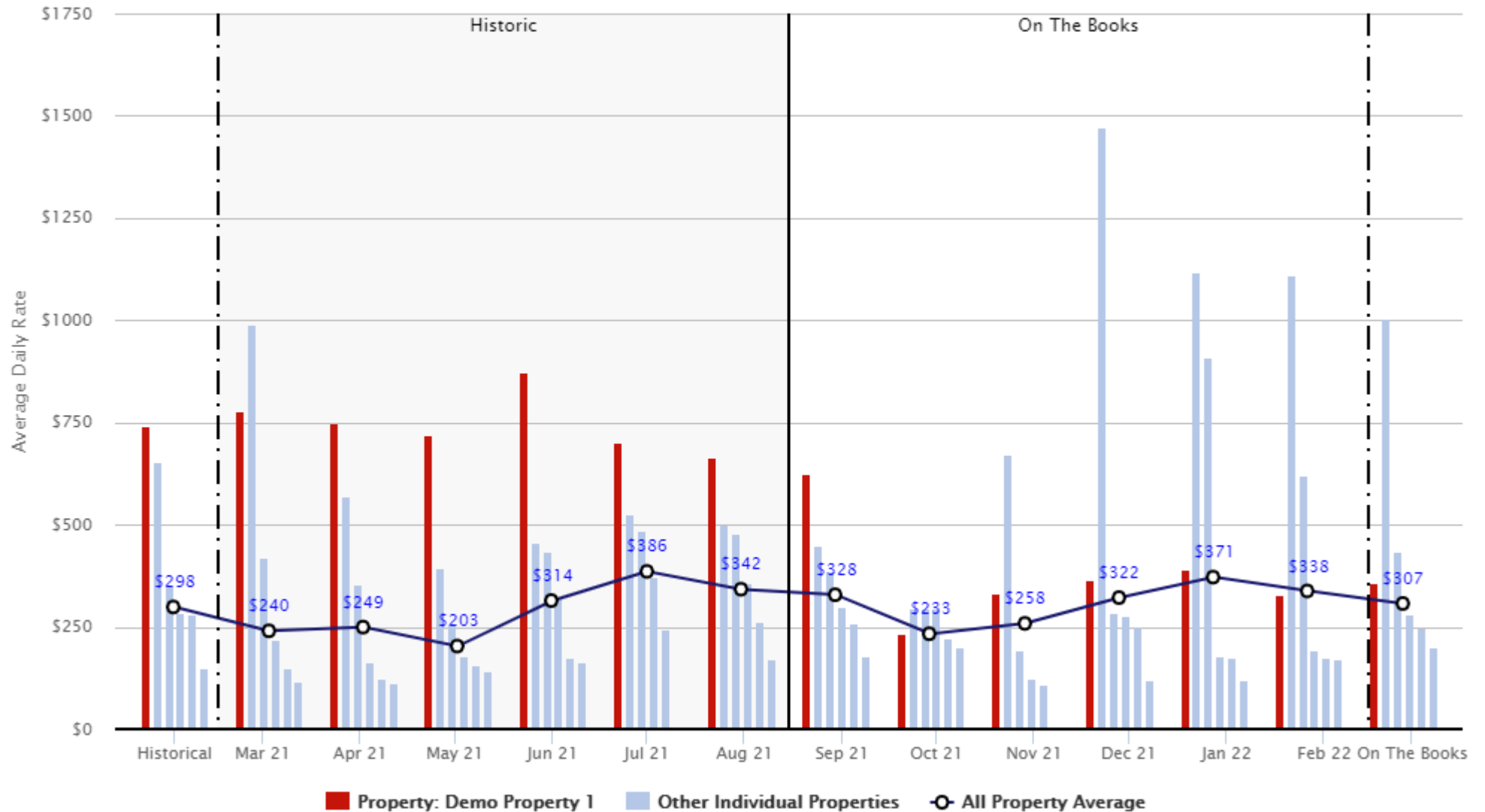
Executive Summary				
	High	Low	Average	Demo Property 1
<b>Last Month Occupancy Comp Set Aggregate: High / Low and Average for Month vs Demo Property 1 Occupancy</b>				
Historic Actual Occupancy for Last Month	92.9%	2.0%	28.7%	2.0%
% Change in Historic Actual Occupancy for Last Month	22.8%	-11.3%	-0.1%	0.0%
<b>Last Month ADR: Comp Set Aggregate High / Low and Average for Month vs Demo Property 1 ADR</b>				
Historic Actual Average Daily Rate for Last Month	\$ 667	\$ 173	\$ 342	\$ 667
% Change in Historic Actual Average Daily Rate for Last Month	44.4%	-20.0%	24.3%	-20.0%
<b>Last Month RevPAR: Comp Set Aggregate High / Low and Average for Month vs Demo Property 1 RevPAR</b>				
Historic Actual RevPAR for Last Month	\$ 466	\$ 13	\$ 98	\$ 13
% Change in Historic Actual RevPAR for Last Month	74.8%	-20.0%	24.2%	-20.0%
<b>Next Month Occupancy: Comp Set Aggregate High / Low and Average for Month vs Demo Property 1 Occupancy</b>				
Historic Actual Occupancy for Next Month	93.9%	2.8%	24.2%	2.8%
% Change in Historic Actual Occupancy for Next Month	220.0%	-2.9%	17.3%	220.0%
<b>Next Month ADR: Comp Set Aggregate High / Low and Average for Month vs Demo Property 1 ADR</b>				
Historic Actual Average Daily Rate for Next Month	\$ 625	\$ 180	\$ 328	\$ 625
% Change in Historic Actual Average Daily Rate for Next Month	53.4%	-21.9%	24.1%	-21.9%
<b>Next Month RevPAR: Comp Set Aggregate High / Low and Average for Month vs Demo Property 1 RevPAR</b>				
Historic Actual RevPAR for Next Month	\$ 421	\$ 17	\$ 79	\$ 17
% Change in Historic Actual RevPAR for Next Month	223.7%	10.6%	45.6%	150.0%

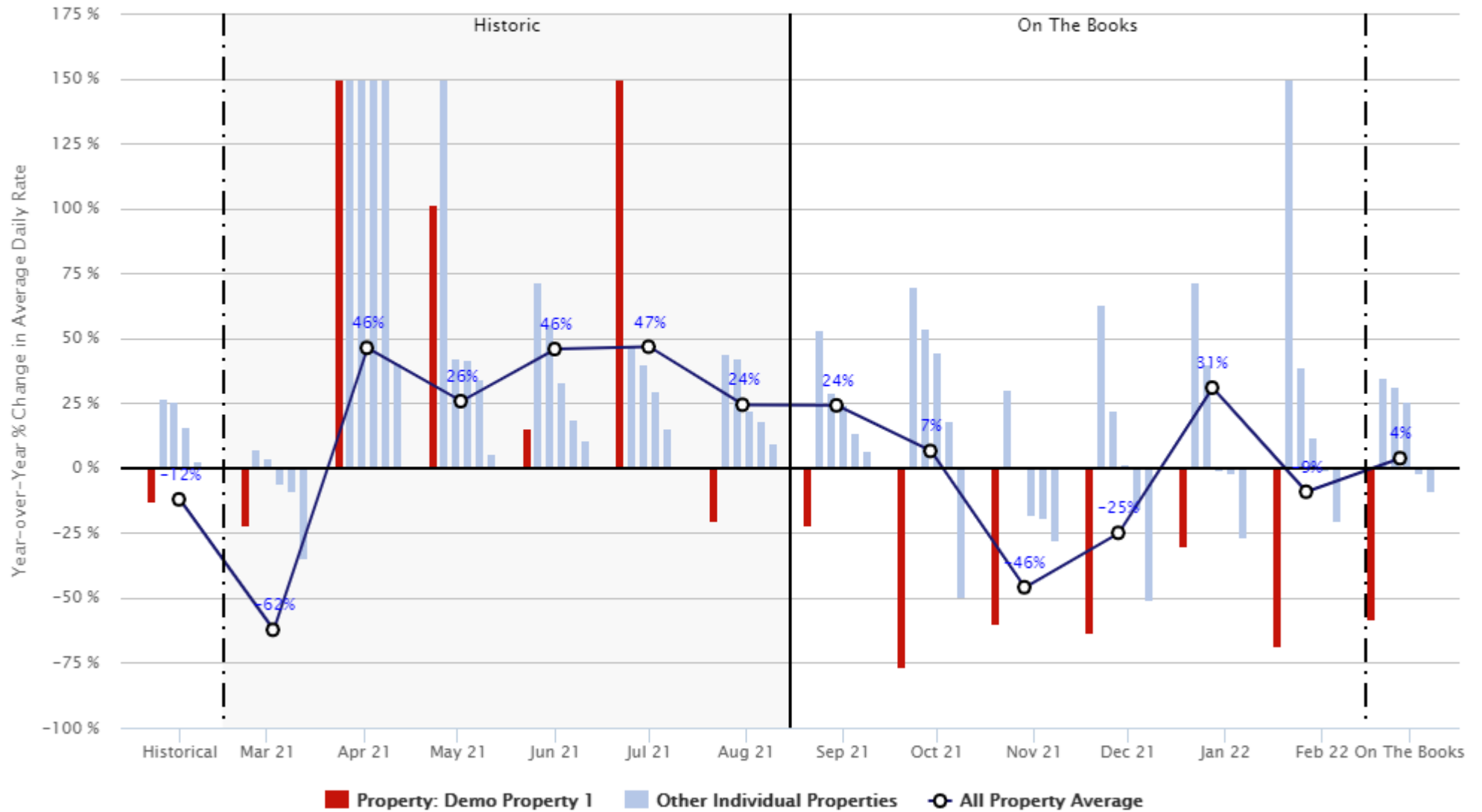
DESCRIPTION: The Multi Destination Comparative Report compares occupancy and average daily rate (ADR) between the Base Destination and all other Inntopia reporting destinations. The red/green data points in the summary above for the base destination indicate that the destination as being above or below the average. In all cases, the Base Destination is represented on the far left of the tables and the far left of the charts. The Base Destination is differentiated on charts with a Red data series bar. All other Destinations are represented with a Green data series bar. All data is sorted in descending order from highest to lowest and left to right, with the all destination average on the far right of the tables. All destination average is differentiated on charts by a blue line data set. Individual destination data may be obtained through the Multi-Destination Comparative Enhanced report, available by contacting DestiMetrics at the address below

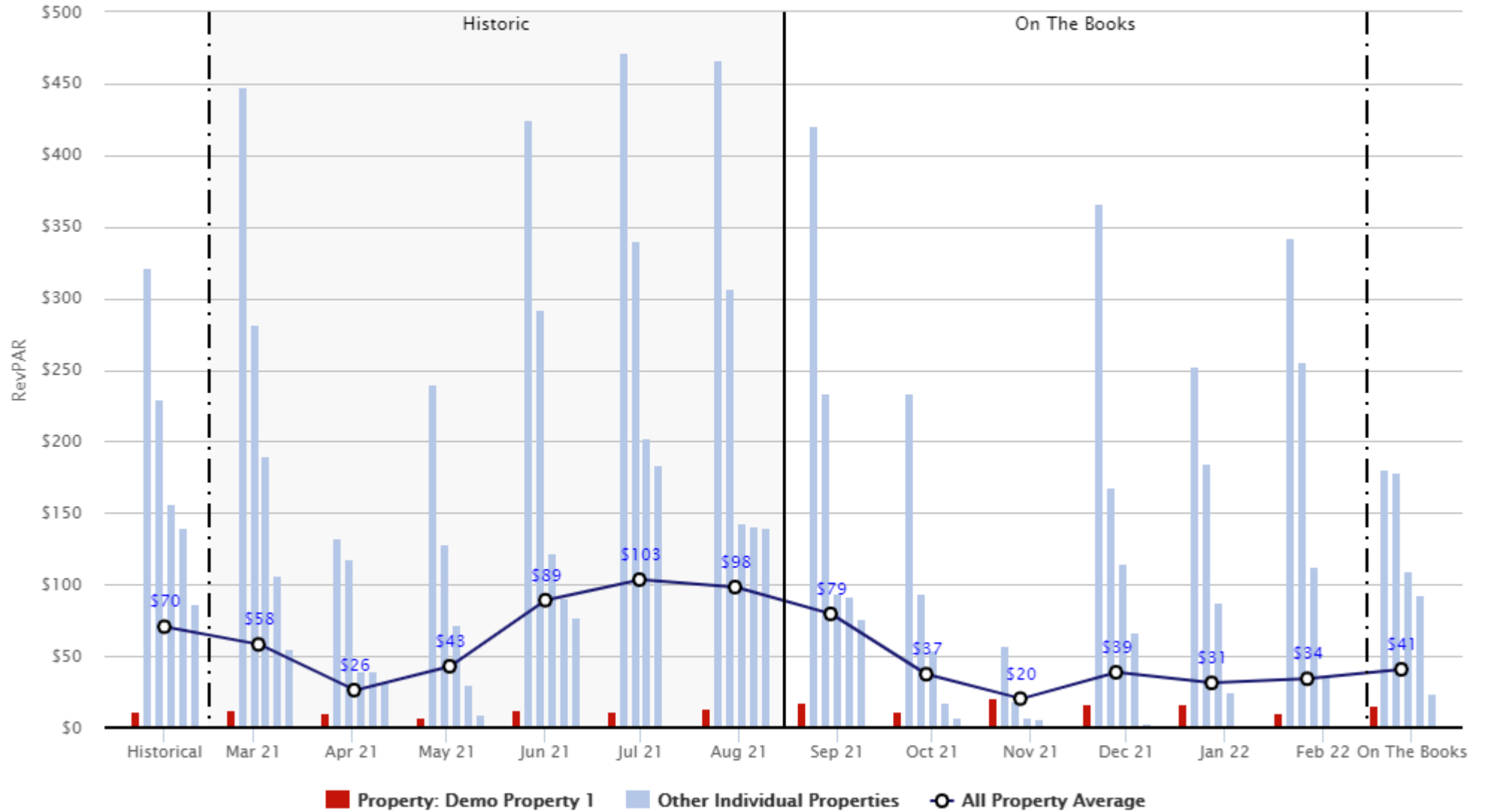
© 2021 Sterling Valley Systems, Inc. All rights reserved. No parts of this work may be reproduced in any form or by any means, graphic, electronic or mechanical, including photocopying, recording, taping or information storage and retrieval systems - without the written permission of the copyright holder. Products that are referred to in this document may be either trademarks and/or registered trademarks of the respective owners. The publisher and the author make no claim to these Trademarks. While every precaution has been taken in the preparation of this document, the publisher and the author assume no responsibility for errors or omissions, or for damages resulting from the use of information contained in this document or from the use of programs and source code that may accompany it. In no event shall the publisher and the author be liable for any loss of profit or any other commercial damage caused or alleged to have been caused directly or indirectly by this document.



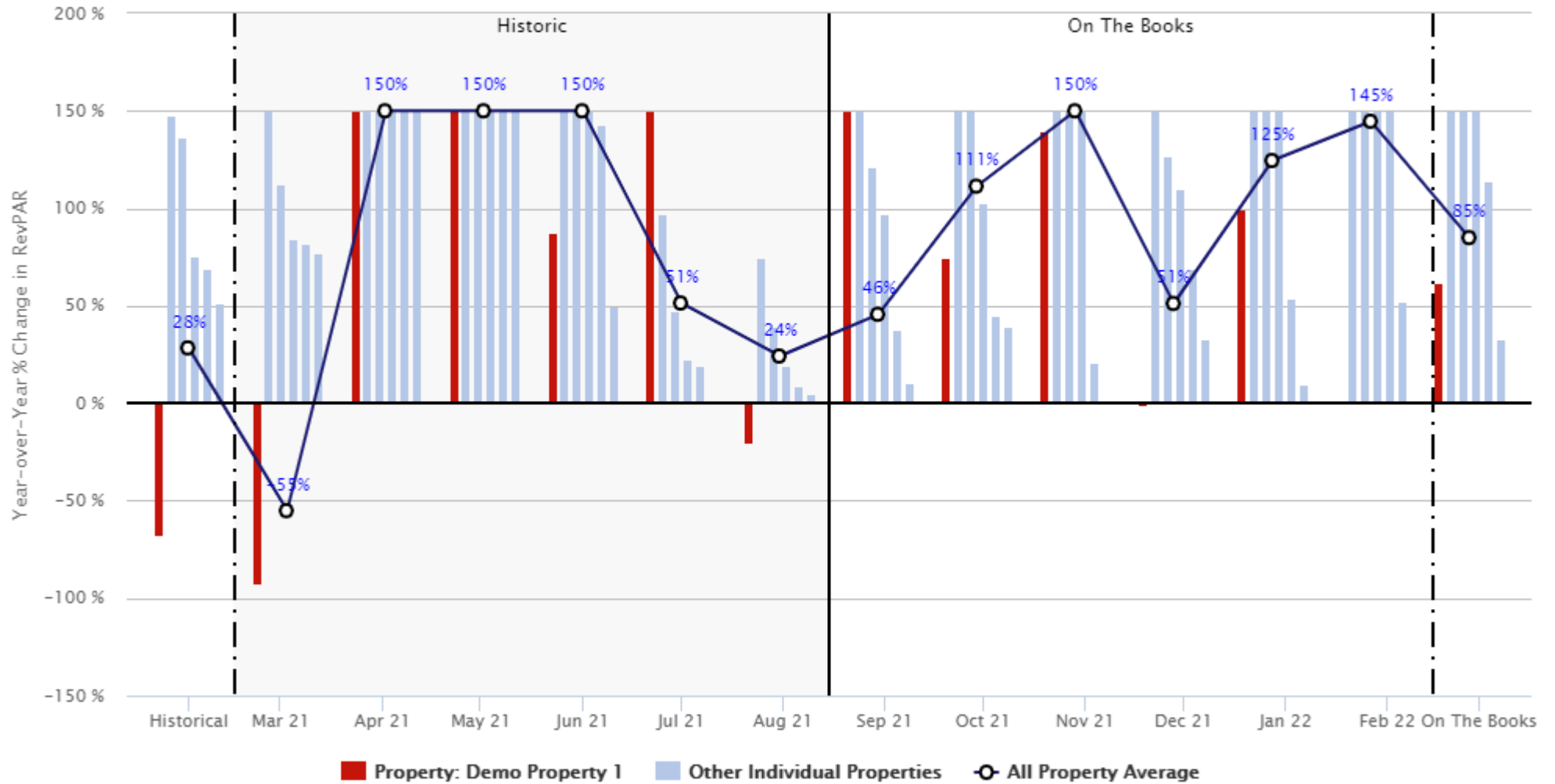








Demo Property 1 Year-over-Year % Change in RevPAR



Monthly Occupancy	Base Destination	Highest Occupancy	Next Highest Occupancy	Next Highest Occupancy	Next Highest Occupancy	Lowest Occupancy	All Destination Average
Mar 21	1.6%	86.8%	71.3%	67.2%	48.1%	45.2%	24.2%
Apr 21	1.4%	80.3%	34.8%	33.3%	26.7%	7.1%	10.5%
May 21	1.0%	91.9%	71.4%	50.6%	19.3%	2.5%	21.1%
Jun 21	1.4%	97.6%	90.5%	70.0%	47.4%	19.8%	28.3%
Jul 21	1.6%	97.0%	91.0%	75.6%	38.5%	0.0%	26.8%
Aug 21	2.0%	92.9%	86.1%	82.7%	53.6%	29.4%	28.7%
Sep 21	2.8%	93.9%	77.8%	42.6%	35.3%	24.1%	24.2%
Oct 21	4.9%	79.1%	46.9%	18.5%	7.8%	2.5%	16.0%
Nov 21	6.2%	46.0%	7.1%	3.4%	2.7%	0.0%	7.8%
Dec 21	4.4%	59.2%	45.6%	24.9%	23.8%	2.7%	12.0%
Jan 22	4.2%	48.7%	22.6%	20.3%	14.1%	1.7%	8.4%
Feb 22	3.2%	58.2%	41.2%	30.9%	20.9%	0.3%	10.1%
<b>Grand Total</b>	2.9%	77.8%	59.7%	37.6%	32.8%	20.8%	18.5%
<b>Historical Months Total</b>	1.5%	91.1%	80.6%	57.4%	49.5%	23.8%	23.6%
<b>On the Books Total</b>	4.3%	64.2%	37.3%	25.4%	17.8%	12.1%	13.2%

Base Destination(s) = Demo Property 1



Occupancy Months Compared	Base Destination	Highest Pacing	Next Strongest Pacing	Next Strongest Pacing	Next Strongest Pacing	Lowest Pacing	All Destination Average
Mar 21 vs. Mar 20	-90.0%	224.0%	184.5%	101.9%	93.2%	64.6%	19.1%
Apr 21 vs. Apr 20	69.0%	3,376.6%	3,225.2%	2,572.4%	605.9%	340.2%	734.2%
May 21 vs. May 20	252.2%	2,296.5%	1,036.5%	407.5%	307.0%	146.7%	614.6%
Jun 21 vs. Jun 20	62.8%	152.4%	139.6%	104.8%	80.8%	12.8%	95.8%
Jul 21 vs. Jul 20	-28.6%	52.0%	3.4%	0.3%	0.0%	-12.6%	3.2%
Aug 21 vs. Aug 20	0.0%	22.8%	-0.9%	-2.3%	-3.6%	-11.3%	-0.1%
Sep 21 vs. Sep 20	220.0%	202.9%	58.2%	44.4%	7.0%	-2.9%	17.3%
Oct 21 vs. Oct 20	650.0%	353.3%	175.3%	80.4%	23.1%	19.3%	98.4%
Nov 21 vs. Nov 20	500.0%	2,174.2%	365.6%	147.1%	47.6%	0.0%	455.4%
Dec 21 vs. Dec 20	170.0%	170.9%	107.0%	100.2%	85.1%	58.5%	101.5%
Jan 22 vs. Jan 21	184.4%	625.0%	260.0%	196.1%	49.8%	9.8%	71.5%
Feb 22 vs. Feb 21	215.4%	872.8%	454.8%	126.3%	110.0%	91.0%	169.3%
<b>Grand Total</b>	<b>14.0%</b>	<b>117.2%</b>	<b>95.1%</b>	<b>85.3%</b>	<b>74.4%</b>	<b>56.5%</b>	<b>57.8%</b>
<b>Historical Months Total</b>	<b>-62.6%</b>	<b>104.7%</b>	<b>96.8%</b>	<b>73.5%</b>	<b>64.9%</b>	<b>19.3%</b>	<b>46.0%</b>
<b>On the Books Total</b>	<b>284.4%</b>	<b>236.7%</b>	<b>140.1%</b>	<b>118.9%</b>	<b>62.6%</b>	<b>45.9%</b>	<b>78.3%</b>
<b>Base Destination(s) = Demo Property 1</b>							

Monthly Average Daily Rate	Base Destination	Highest ADR	Next Highest ADR	Next Highest ADR	Next Highest ADR	Lowest ADR	All Destination Average
Mar 21	\$ 780	\$ 991	\$ 420	\$ 219	\$ 149	\$ 116	\$ 240
Apr 21	\$ 750	\$ 569	\$ 354	\$ 166	\$ 123	\$ 114	\$ 249
May 21	\$ 719	\$ 394	\$ 261	\$ 179	\$ 158	\$ 143	\$ 203
Jun 21	\$ 875	\$ 456	\$ 436	\$ 323	\$ 174	\$ 163	\$ 314
Jul 21	\$ 700	\$ 526	\$ 486	\$ 374	\$ 243	\$ 0	\$ 386
Aug 21	\$ 667	\$ 502	\$ 477	\$ 356	\$ 263	\$ 173	\$ 342
Sep 21	\$ 625	\$ 448	\$ 387	\$ 301	\$ 260	\$ 180	\$ 328
Oct 21	\$ 233	\$ 295	\$ 295	\$ 295	\$ 224	\$ 201	\$ 233
Nov 21	\$ 333	\$ 673	\$ 195	\$ 126	\$ 110	\$ 0	\$ 258
Dec 21	\$ 367	\$ 1,472	\$ 285	\$ 278	\$ 252	\$ 120	\$ 322
Jan 22	\$ 391	\$ 1,119	\$ 910	\$ 181	\$ 176	\$ 120	\$ 371
Feb 22	\$ 328	\$ 1,109	\$ 620	\$ 194	\$ 175	\$ 173	\$ 338
<b>Grand Total</b>	\$ 460	\$ 803	\$ 332	\$ 324	\$ 274	\$ 161	\$ 302
<b>Historical Months Total</b>	\$ 743	\$ 654	\$ 353	\$ 285	\$ 282	\$ 152	\$ 298
<b>On the Books Total</b>	\$ 359	\$ 1,005	\$ 433	\$ 281	\$ 249	\$ 199	\$ 307

Base Destination(s) = Demo Property 1

**Demo Property 1 Year-over-Year % change in Average Daily Rate (Most Recent Data)**

Multi Property Comparative Report as of Aug 31, 2021

Average Daily Months Compared	Base Destination	Highest Pacing	Next Strongest Pacing	Next Strongest Pacing	Next Strongest Pacing	Lowest Pacing	All Destination Average
Mar 21 vs. Mar 20	-22.0%	7.6%	4.2%	-5.7%	-8.9%	-34.4%	-62.3%
Apr 21 vs. Apr 20	200.0%	56,805.6%	35,312.5%	12,158.8%	11,309.8%	40.6%	46.2%
May 21 vs. May 20	101.2%	39,315.4%	42.5%	41.9%	34.1%	5.4%	25.7%
Jun 21 vs. Jun 20	15.1%	71.7%	55.3%	33.2%	18.6%	11.0%	45.8%
Jul 21 vs. Jul 20	988.9%	46.7%	40.3%	29.6%	15.3%	0.0%	46.7%
Aug 21 vs. Aug 20	-20.0%	44.4%	42.3%	22.1%	18.2%	9.7%	24.3%
Sep 21 vs. Sep 20	-21.9%	53.4%	29.1%	24.8%	13.9%	6.9%	24.1%
Oct 21 vs. Oct 20	-76.7%	69.8%	53.8%	44.7%	18.1%	-49.3%	6.5%
Nov 21 vs. Nov 20	-60.0%	30.3%	0.0%	-18.0%	-18.8%	-27.7%	-45.9%
Dec 21 vs. Dec 20	-63.3%	63.2%	22.6%	1.5%	-15.6%	-50.9%	-25.0%
Jan 22 vs. Jan 21	-29.7%	71.8%	40.1%	-0.5%	-1.8%	-26.5%	30.9%
Feb 22 vs. Feb 21	-68.3%	333.1%	39.0%	11.9%	-0.8%	-20.3%	-9.1%
<b>Grand Total</b>	<b>-46.0%</b>	<b>28.3%</b>	<b>25.8%</b>	<b>20.9%</b>	<b>7.9%</b>	<b>-1.4%</b>	<b>-7.3%</b>
<b>Historical Months Total</b>	<b>-12.8%</b>	<b>27.1%</b>	<b>25.9%</b>	<b>15.7%</b>	<b>2.6%</b>	<b>1.2%</b>	<b>-12.1%</b>
<b>On the Books Total</b>	<b>-58.0%</b>	<b>35.0%</b>	<b>31.5%</b>	<b>25.6%</b>	<b>-2.0%</b>	<b>-8.7%</b>	<b>3.7%</b>

Base Destination(s) = Demo Property 1

Monthly RevPAR	Base Destination	Highest RevPAR	Next Highest RevPAR	Next Highest RevPAR	Next Highest RevPAR	Lowest RevPAR	All Destination Average
Mar 21	\$ 13	\$ 448	\$ 282	\$ 190	\$ 106	\$ 56	\$ 58
Apr 21	\$ 10	\$ 133	\$ 118	\$ 40	\$ 40	\$ 33	\$ 26
May 21	\$ 8	\$ 240	\$ 128	\$ 72	\$ 31	\$ 10	\$ 43
Jun 21	\$ 12	\$ 425	\$ 293	\$ 122	\$ 90	\$ 77	\$ 89
Jul 21	\$ 11	\$ 471	\$ 341	\$ 203	\$ 184	\$ 0	\$ 103
Aug 21	\$ 13	\$ 466	\$ 307	\$ 144	\$ 141	\$ 140	\$ 98
Sep 21	\$ 17	\$ 421	\$ 234	\$ 93	\$ 92	\$ 77	\$ 79
Oct 21	\$ 11	\$ 233	\$ 94	\$ 54	\$ 17	\$ 7	\$ 37
Nov 21	\$ 21	\$ 58	\$ 18	\$ 8	\$ 7	\$ 0	\$ 20
Dec 21	\$ 16	\$ 366	\$ 168	\$ 115	\$ 66	\$ 3	\$ 39
Jan 22	\$ 16	\$ 253	\$ 184	\$ 88	\$ 25	\$ 2	\$ 31
Feb 22	\$ 10	\$ 343	\$ 255	\$ 113	\$ 36	\$ 0	\$ 34
<b>Grand Total</b>	\$ 13	\$ 252	\$ 167	\$ 164	\$ 125	\$ 53	\$ 56
<b>Historical Months Total</b>	\$ 11	\$ 321	\$ 229	\$ 156	\$ 139	\$ 87	\$ 70
<b>On the Books Total</b>	\$ 15	\$ 181	\$ 179	\$ 110	\$ 93	\$ 24	\$ 41

Base Destination(s) = Demo Property 1

RevPAR Months Compared	Base Destination	Highest Pacing	Next Strongest Pacing	Next Strongest Pacing	Next Strongest Pacing	Lowest Pacing	All Destination Average
Mar 21 vs. Mar 20	-92.2%	196.4%	112.6%	84.0%	82.2%	77.1%	-55.1%
Apr 21 vs. Apr 20	406.9%	11,675.4%	3,916.9%	3,866.8%	3,176.1%	519.1%	1,120.0%
May 21 vs. May 20	608.9%	2,424.9%	1,519.0%	872.3%	620.0%	446.0%	798.5%
Jun 21 vs. Jun 20	87.4%	311.5%	180.8%	180.2%	142.9%	50.2%	185.4%
Jul 21 vs. Jul 20	677.8%	96.9%	47.2%	22.6%	19.2%	0.0%	51.4%
Aug 21 vs. Aug 20	-20.0%	74.8%	39.1%	19.3%	8.8%	4.9%	24.2%
Sep 21 vs. Sep 20	150.0%	223.7%	121.5%	97.4%	38.2%	10.6%	45.6%
Oct 21 vs. Oct 20	75.0%	597.4%	161.0%	102.6%	45.4%	39.6%	111.4%
Nov 21 vs. Nov 20	140.0%	1,747.3%	236.5%	222.0%	20.9%	0.0%	200.4%
Dec 21 vs. Dec 20	-1.0%	158.6%	126.9%	110.2%	69.0%	33.1%	51.2%
Jan 22 vs. Jan 21	100.0%	621.2%	408.8%	253.3%	53.8%	10.1%	124.5%
Feb 22 vs. Feb 21	-0.1%	865.0%	809.4%	520.6%	214.6%	52.2%	144.6%
<b>Grand Total</b>	<b>-38.5%</b>	<b>162.6%</b>	<b>137.8%</b>	<b>119.3%</b>	<b>110.4%</b>	<b>54.3%</b>	<b>46.2%</b>
<b>Historical Months Total</b>	<b>-67.4%</b>	<b>147.8%</b>	<b>136.8%</b>	<b>75.5%</b>	<b>69.2%</b>	<b>51.6%</b>	<b>28.4%</b>
<b>On the Books Total</b>	<b>61.6%</b>	<b>229.9%</b>	<b>201.5%</b>	<b>195.6%</b>	<b>113.9%</b>	<b>33.2%</b>	<b>84.9%</b>

Base Destination(s) = Demo Property 1